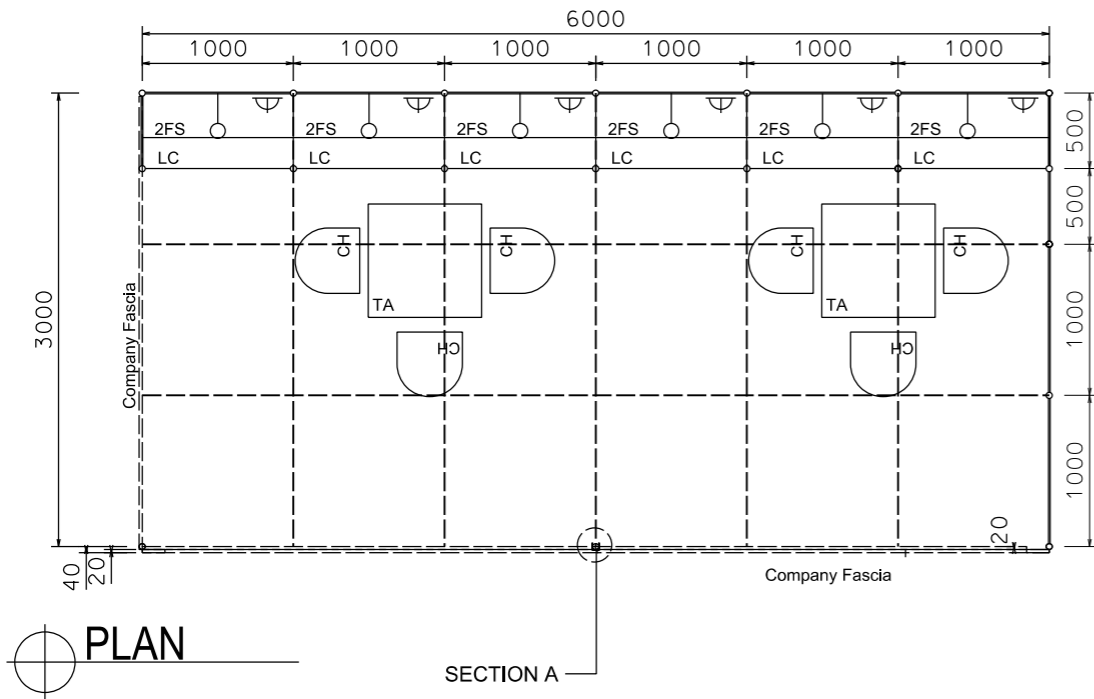


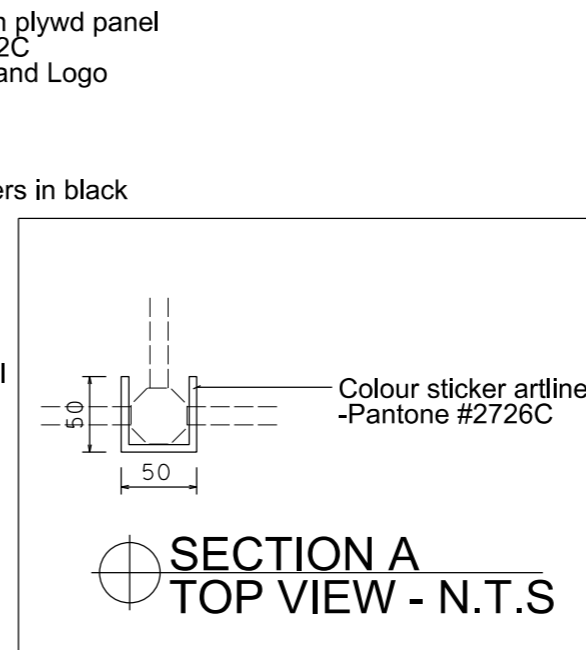
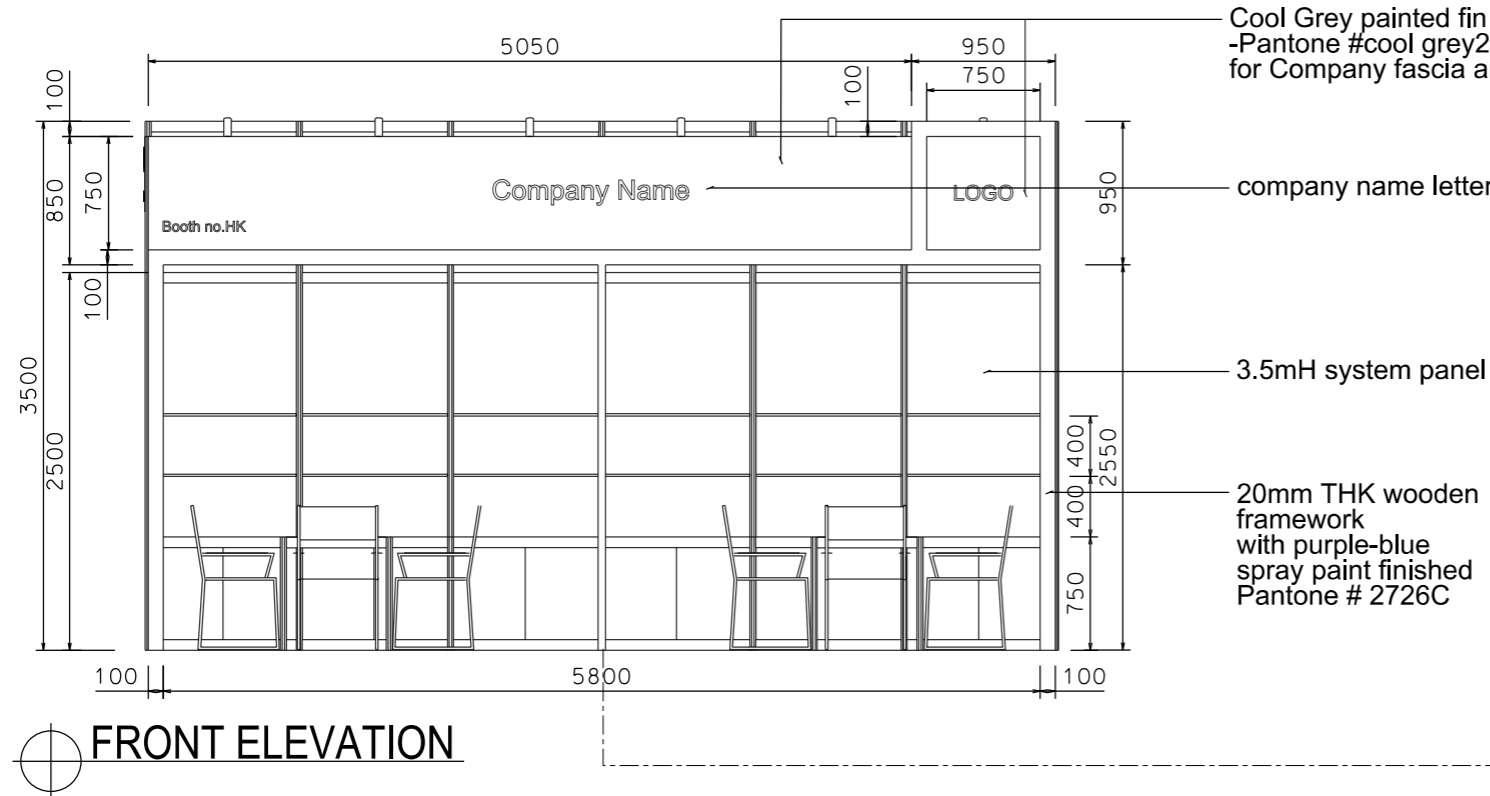
Premium Booth 6mW x 3mD Left Corner Booth

LT-A-18-L Cnr
6mW x 3mD x 3.5mH



PERSPECTIVE N.T.S

COLOUR PERSPECTIVE N.T.S



| BOOTH SPECIFICATION | | QTY |
|---------------------|--|-----|
| | Lockable cabinet (1mL x 0.5mD x 0.75mH) | 6 |
| | Wooden shelf (flat) (1mL x 0.3mD) | 12 |
| | Square meeting table (0.7m X0.7m x 0.75mH) | 2 |
| | Black leather chair | 6 |
| | Longarmed spotlight w/23 watt energy saving lamp (yellow) set at 3.5mH | 6 |
| | 800w Square pin power socket | 6 |
| | Ceiling grid (175mmH) set at 3.4mH | 27m |

FILE PATH - L:\Local Fair Premium Booth 2011\LT-A layout\LT-A-2dLayout_2012.dgn



NOTES UNLESS OTHERWISE SPECIFIED ALL DIMENSIONS ARE IN MM.

| | |
|-------|-------|
| | |
| | |
| | |

REVISION
19/10/09
23/02/2010
25/02/2010
13/12/2011

| | |
|-------------|-------------|
| DATE: | 12-01-2009 |
| SCALE: | 1 : 50 (A3) |
| DRAWN BY: | .. |
| CHECKED BY: | |

TITLE
Premium Booth
LT-A-18
L-Corner

PROJECT
PREMIUM BOOTH
6m x 3m
DATE: XXXXXXXX

SHEET
LT-A026