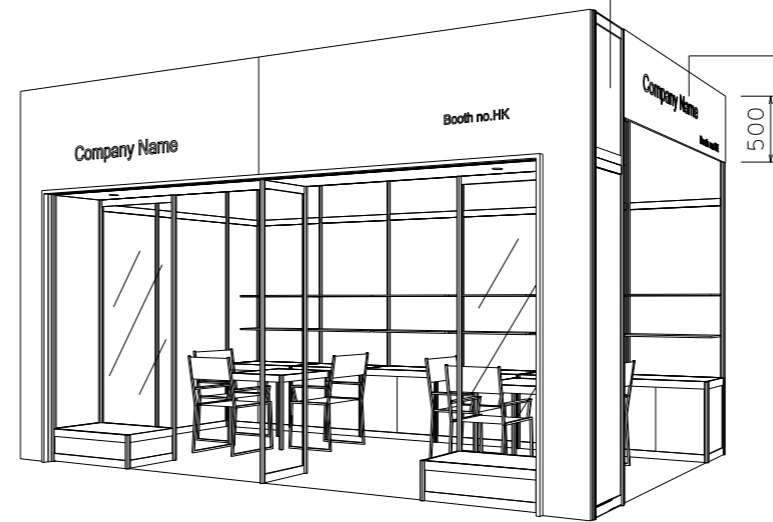
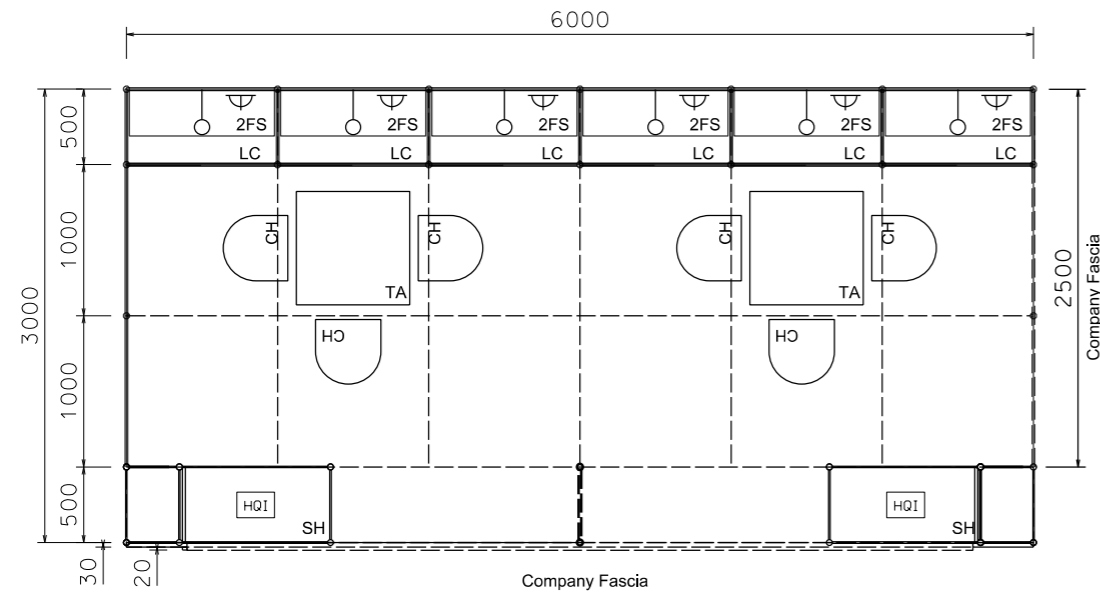


Premium Booth 6mW x 3mD Right Corner Booth

LT-B-18-R_Cnr
6mW x 3mD x 3.5mH

System side panel w/
grey sticker (OR 072) fin.

Wooden plywd company
fascia in spray painted fin.
-Pantone #2603C
-Company name in white

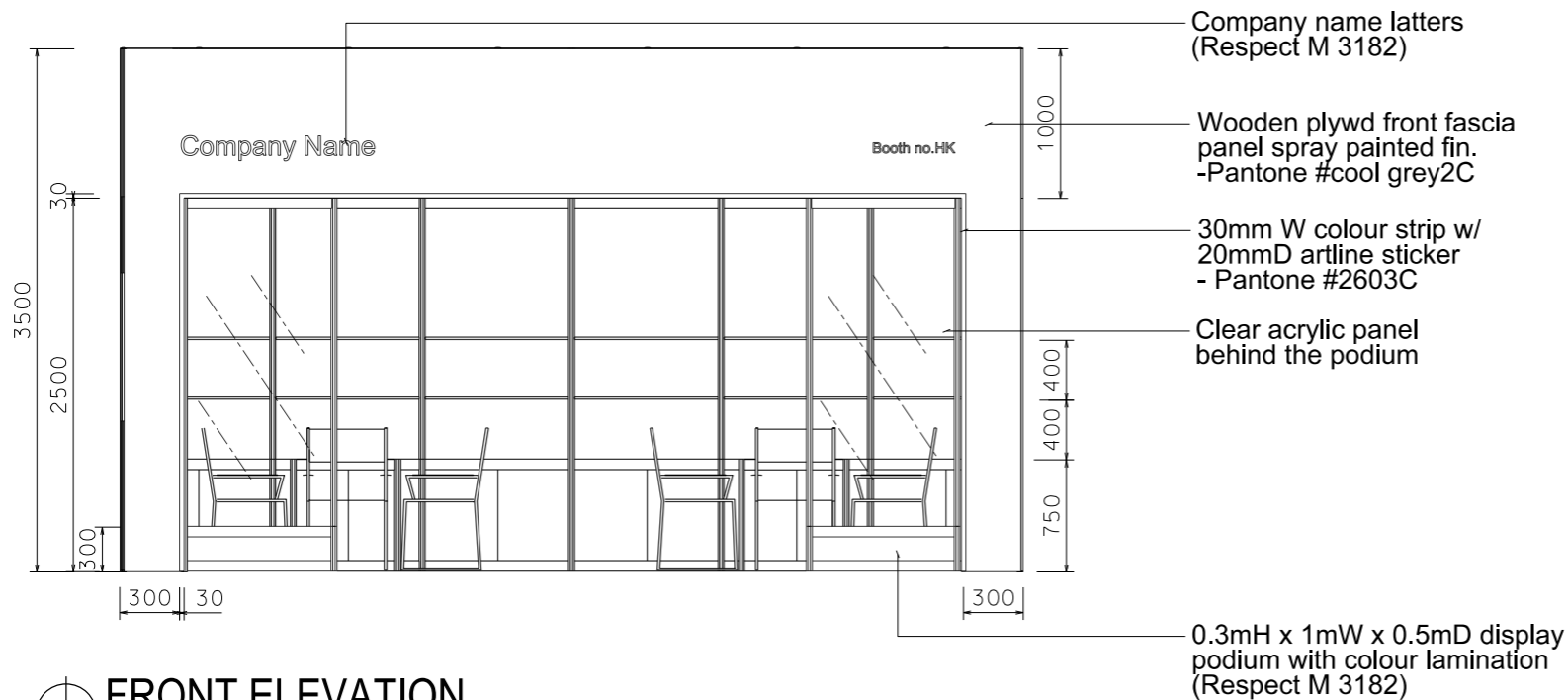


PERSPECTIVE N.T.S



COLOUR PERSPECTIVE N.T.S

PLAN



FRONT ELEVATION

BOOTH SPECIFICATION		QTY
	Front display podium (1mW x 0.3mH) with clear acrylic back panel in colour sticker lamination w/. 1 x HQI white light	2
	Lockable cabinet (1mL x 0.5mD x 0.75mH)	6
	Wooden shelf (flat) (1mL x 0.3mD)	12
	Square meeting table (0.7m X0.7m x 0.75mH)	2
	Black leather chair	6
	Longarmed spotlight w/23 watt energy saving lamp (yellow) set at 3.5mH	6
	800w Square pin power socket	6
	Ceiling grid (175mmH) set at 3.5mH	30.5m

FILE PATH - L:\Local Fair Premium Booth 2011\LT-B layout\LT-B-2dLayout_update.dgn



NOTES UNLESS OTHERWISE SPECIFIED ALL DIMENSIONS ARE IN MM.

.....
.....
.....

.....
.....
.....

REVISION
23/02/2010
13/04/2011
16-10-2013
06/02/2014

DATE: 06/02/2014
SCALE: 1 : 50 (A3)
DRAWN BY: ..
CHECKED BY:

TITLE
Premium Booth
LT-B-18
R Corner

PROJECT
PREMIUM BOOTH
6m x 3m
R Corner
DATE: XXXXXXXX

SHEET
LT-B02a