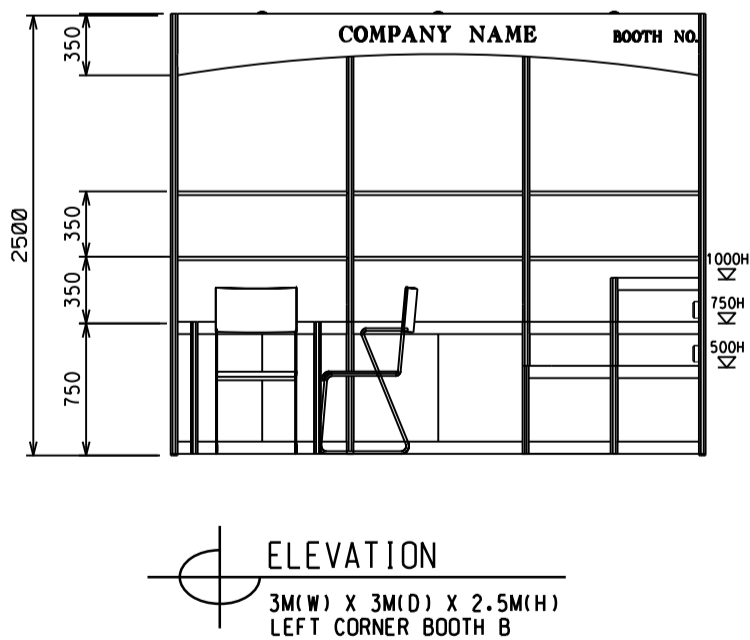
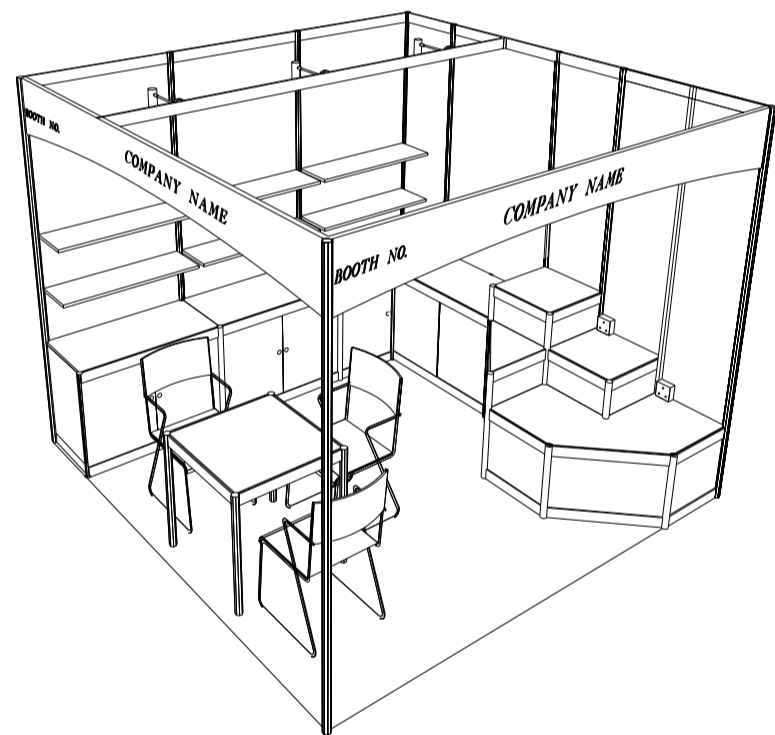
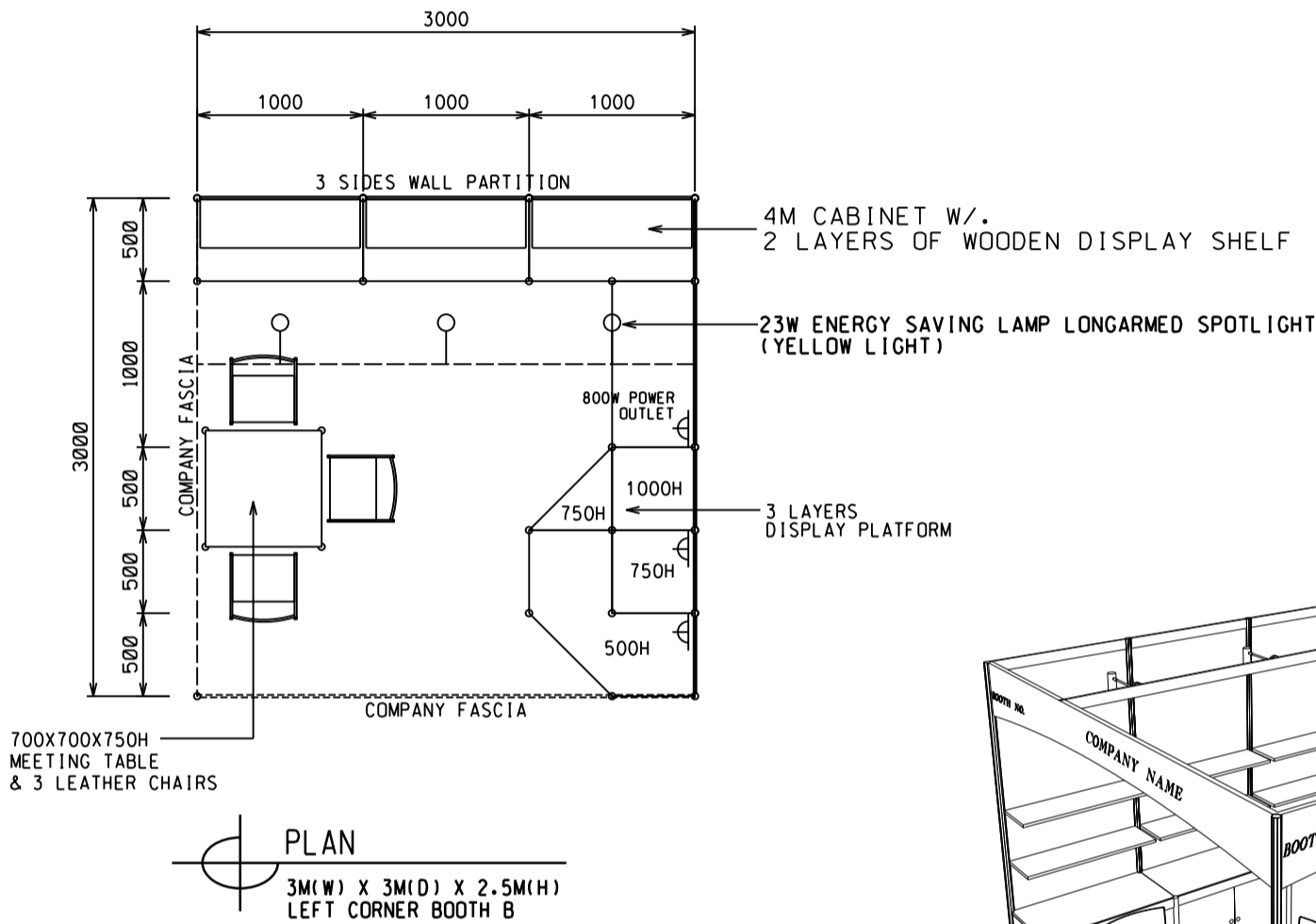


Hong Kong International Lighting Fair (Autumn Edition)

香港國際秋季燈飾展

9 sqm. Left Corner Booth (Option B)

九平方米左面角位攤位 (建議 B)



BOOTH SPECIFICATIONS		QTY.
	1000W x 500D x 750H CABINET	4
	3000W x 300D WOODEN DISPLAY SHELF	2
	3 LAYERS OF DISPLAY PLATFORM	1
	700W x 700D x 750H MEETING TABLE	1
	BLACK LEATHER CHAIR	3
	23W ENERGY SAVING LAMP LONGARMED SPOTLIGHT (YELLOW LIGHT)	3
	800W SOCKET	3
	H70mm CEILING BEAM	3M
	RUBBISH BIN & CARPET (9sqm.)	