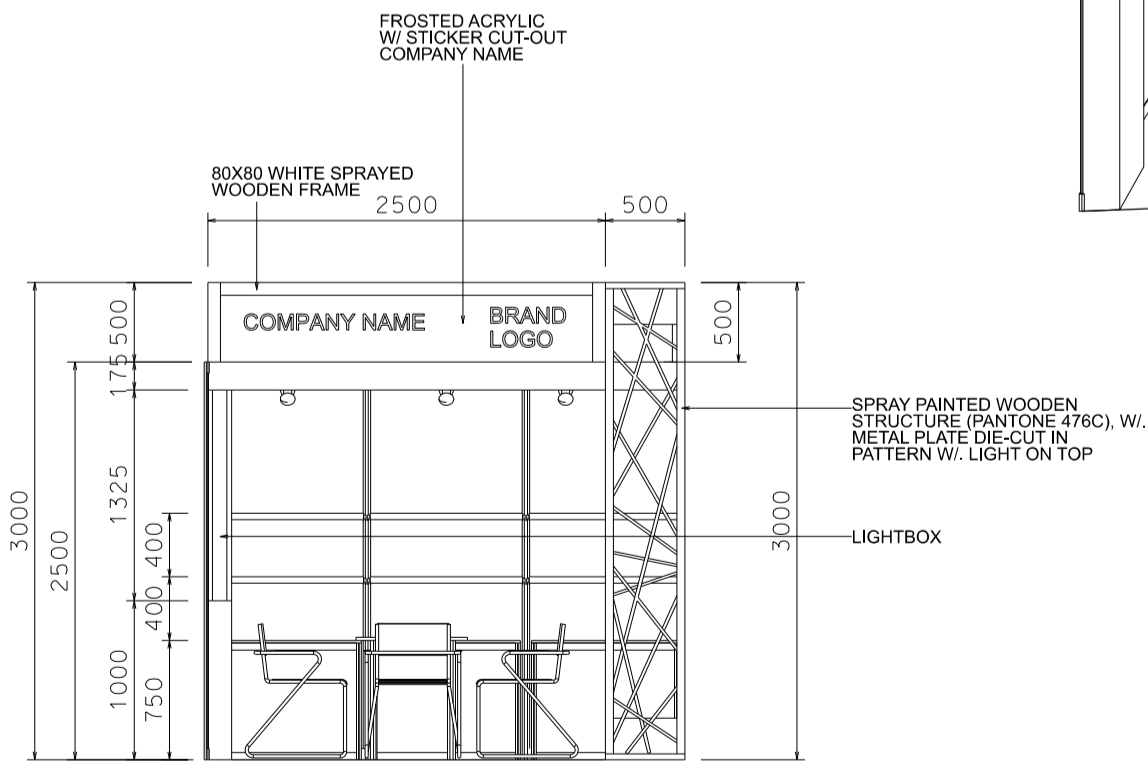
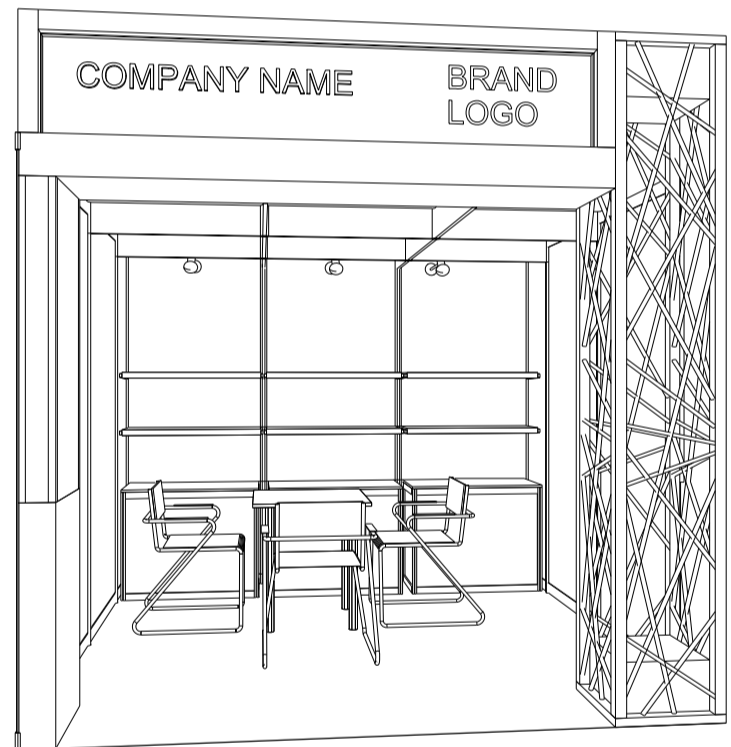
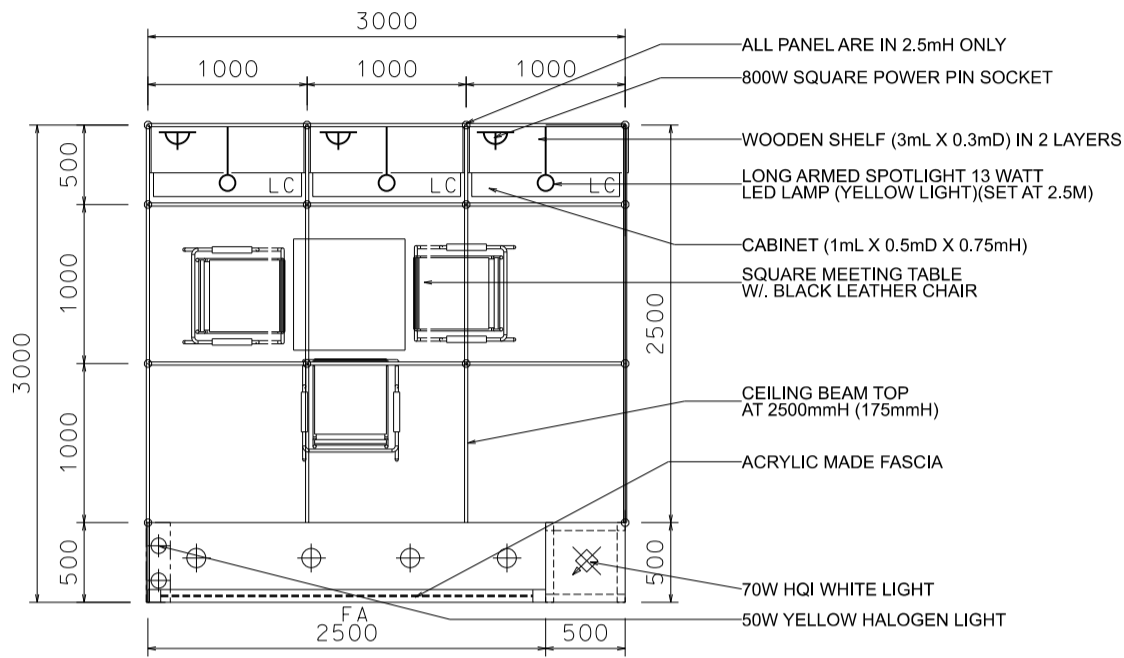


9 sqm. Hall of Aurora non-corner booth



LEGEND	DESCRIPTION	QTY
LC	1000MM W. X 500MM D. X 750MM HT. LOCKABLE CABINET	3
□	3000mmL X 300mmD FLAT WOODEN SHELF	2
TA	SQUARE MEETING TABLE	1
CH	BLACK LEATHER CHAIR	3
---	175mmH CEILING BEAM	11M
⊙	LONG ARMED SPOTLIGHT 13 WATT LED LAMP (YELLOW LIGHT)	3
⊗	70W HQI (WHITE LIGHT)	1
⊕	50W YELLOW HALOGEN LIGHT	8
⌒	800W SQUARE PIN POWER SOCKET	3

Maximum weight of lighting products hanging in the ceiling grid is 30kg (evenly distributed).
分佈懸掛於天花橫樑上的燈飾產品合共最高負重為30公斤

*The Hong Kong Trade Development Council reserves the right to change the configuration if necessary.

*如有需要，香港貿易發展局有權更改攤位結構。