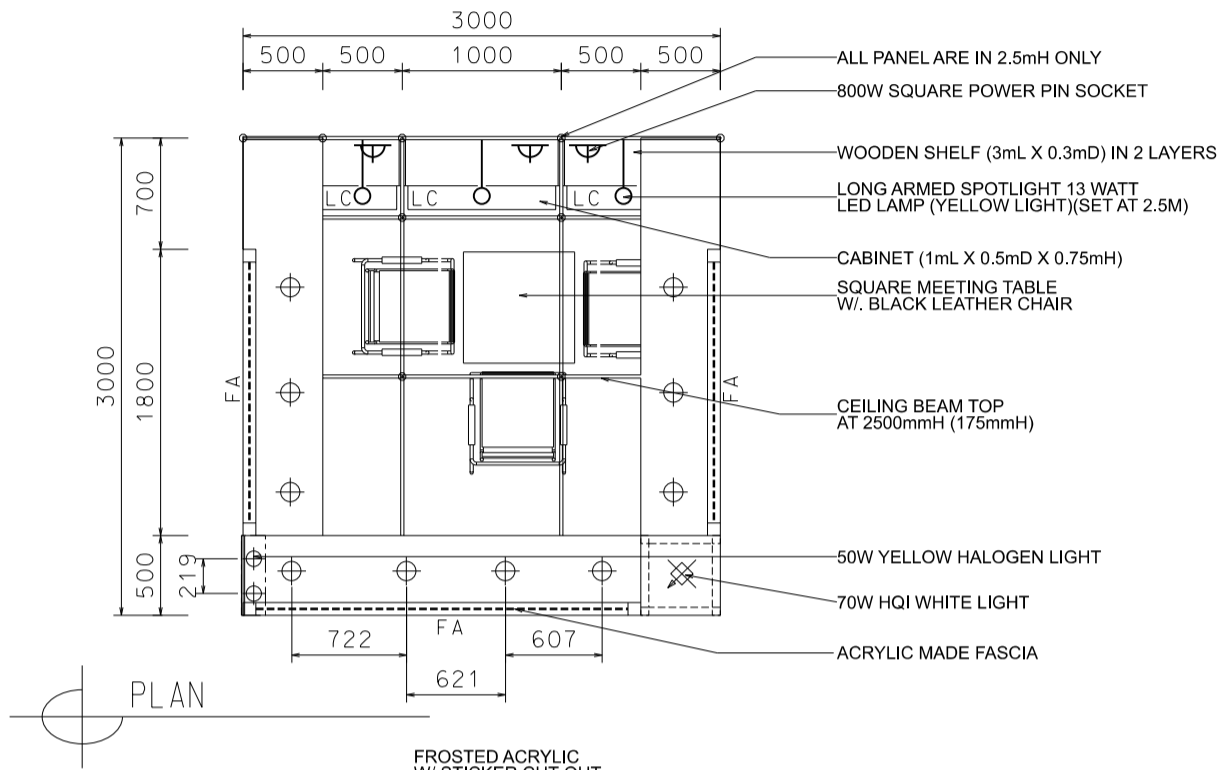
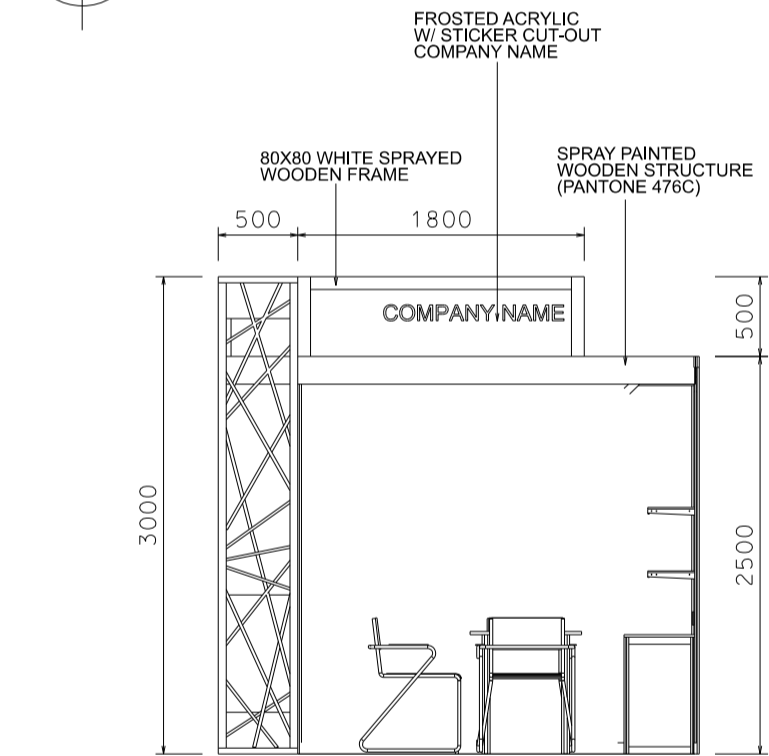


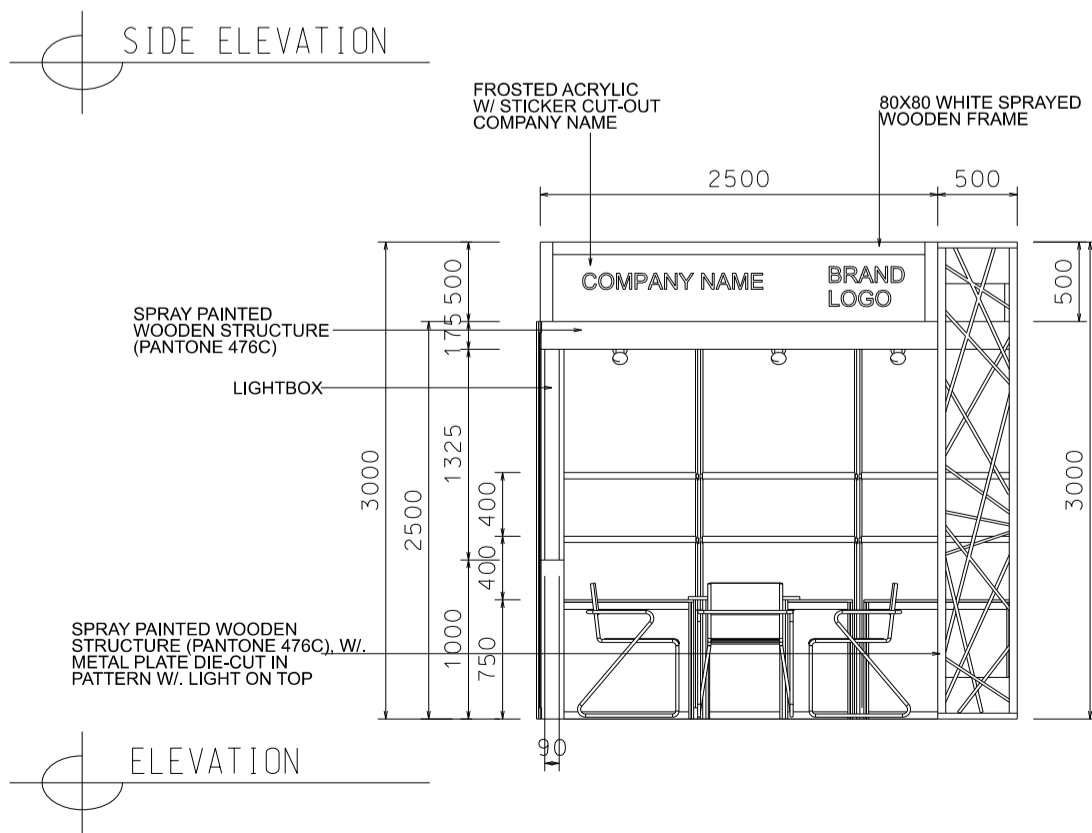
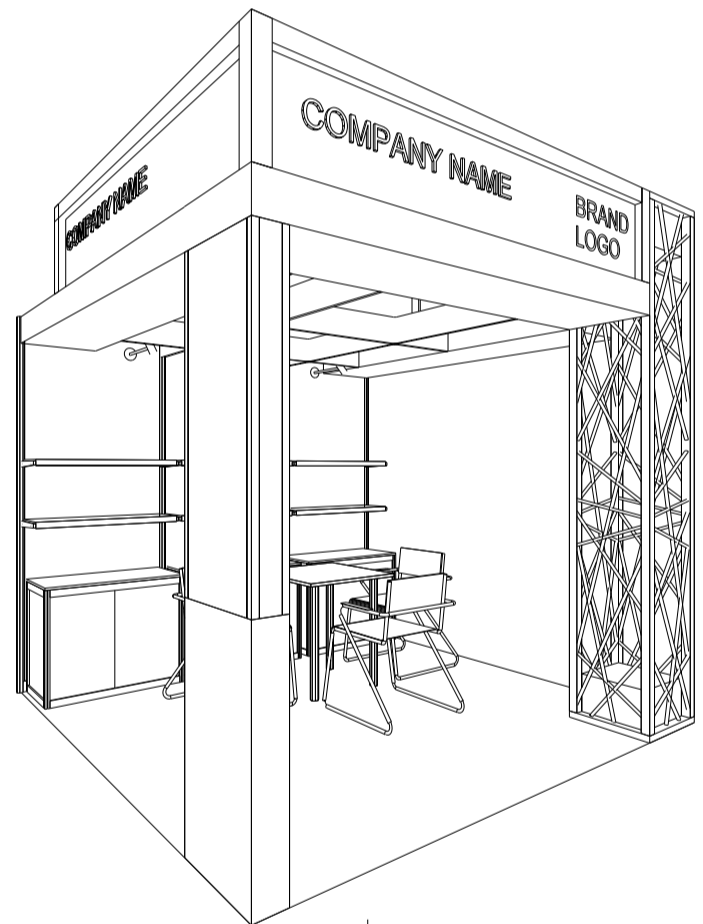
9 sqm. Hall of Aurora 3 sides open booth



- ALL PANEL ARE IN 2.5mH ONLY
- 800W SQUARE POWER PIN SOCKET
- WOODEN SHELF (3mL X 0.3mD) IN 2 LAYERS
- LONG ARMED SPOTLIGHT 13 WATT LED LAMP (YELLOW LIGHT)(SET AT 2.5M)
- CABINET (1mL X 0.5mD X 0.75mH)
- SQUARE MEETING TABLE W/ BLACK LEATHER CHAIR
- CEILING BEAM TOP AT 2500mmH (175mmH)
- 50W YELLOW HALOGEN LIGHT
- 70W HQI WHITE LIGHT
- ACRYLIC MADE FASCIA



- FROSTED ACRYLIC W/ STICKER CUT-OUT COMPANY NAME
- 80X80 WHITE SPRAYED WOODEN FRAME
- SPRAY PAINTED WOODEN STRUCTURE (PANTONE 476C)



- FROSTED ACRYLIC W/ STICKER CUT-OUT COMPANY NAME
- 80X80 WHITE SPRAYED WOODEN FRAME

LEGEND	DESCRIPTION	QTY
LC	1000MM W. X 500MM D. X 750MM HT. LOCKABLE CABINET	3
□	3000mmL X 300mmD FLAT WOODEN SHELF	2
TA	SQUARE MEETING TABLE	1
CH	BLACK LEATHER CHAIR	3
---	175mmH CEILING BEAM	9M
⊙	LONG ARMED SPOTLIGHT 13 WATT LED LAMP (YELLOW LIGHT)	3
⊗	70W HQI (WHITE LIGHT)	1
⊕	50W YELLOW HALOGEN LIGHT	14
⌒	800W SQUARE PIN POWER SOCKET	3

Maximum weight of lighting products hanging in the ceiling grid is 15kg (evenly distributed).
分佈懸掛於天花橫樑上的燈飾產品合共最高負重為15公斤

*The Hong Kong Trade Development Council reserves the right to change the configuration if necessary.

*如有需要，香港貿易發展局有權更改攤位結構。