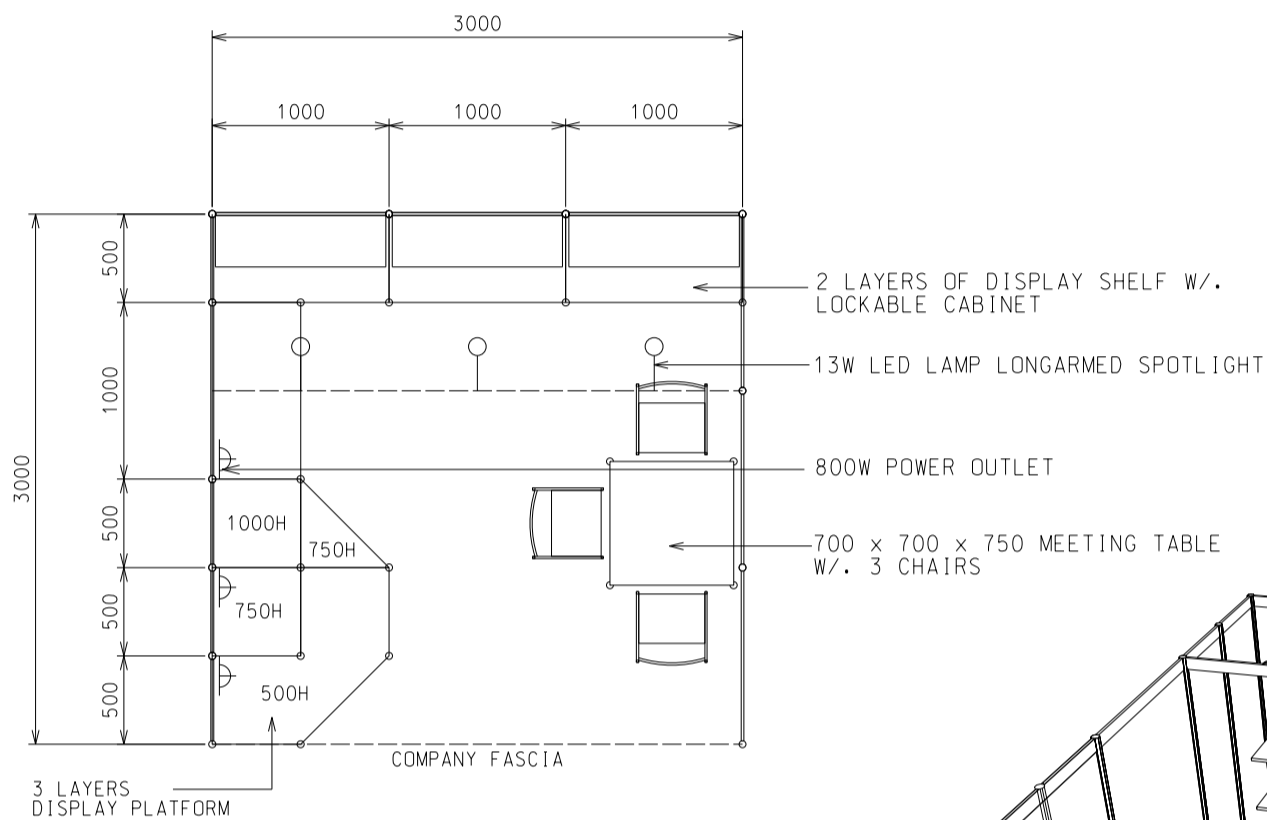
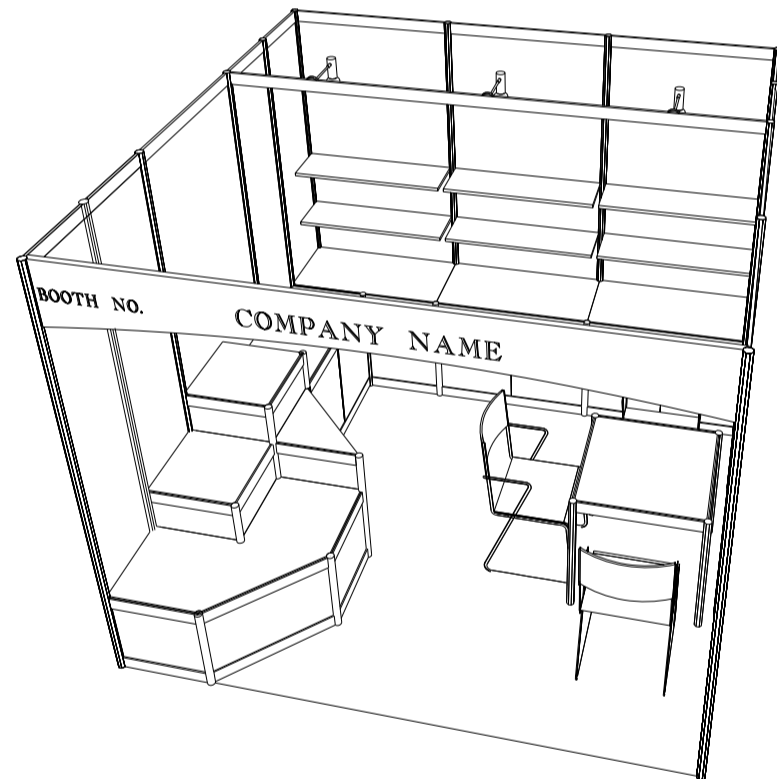


### 9 sqm. Standard Booth (Option B)

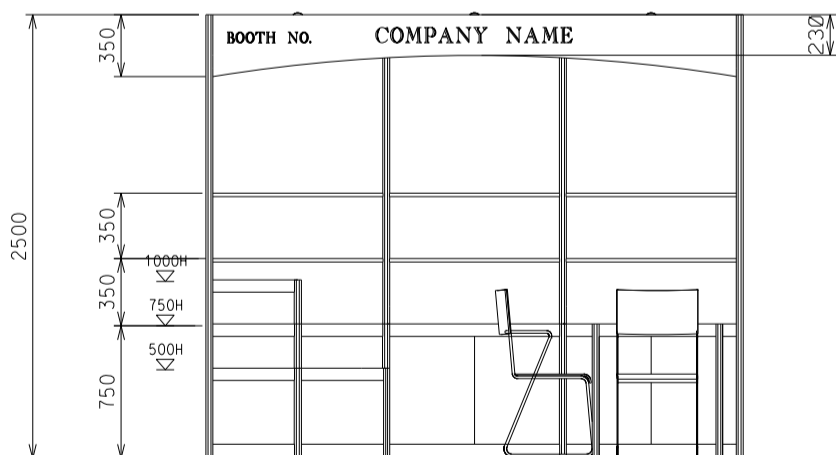
九平方米標準攤位 (建議B)



PLAN  
3M(W) X 3M(D) X 2.5M(H)  
Standard Booth B



PERSPECTIVE  
3M(W) X 3M(D) X 2.5M(H)  
Standard Booth B



ELEVATION  
3M(W) X 3M(D) X 2.5M(H)  
Standard Booth B

| BOOTH SPECIFICATIONS         |   | QTY. |
|------------------------------|---|------|
|                              | 1000W x 500D x 750H LOCKABLE CABINET            | 4    |
|                              | 3000W x 300D WOODEN DISPLAY SHELF               | 2    |
|                              | 3 LAYERS OF DISPLAY PLATFORM                    | 1    |
|                              | 700W x 700D x 750H MEETING TABLE                | 1    |
|                              | BLACK LEATHER CHAIR                             | 3    |
|                              | 13W LED LAMP LONGARMED SPOTLIGHT (YELLOW LIGHT) | 3    |
|                              | 800W SOCKET                                     | 3    |
|                              | H70mm CEILING BEAM                              | 3M   |
| RUBBISH BIN & CARPET (9sqm.) |   |      |